

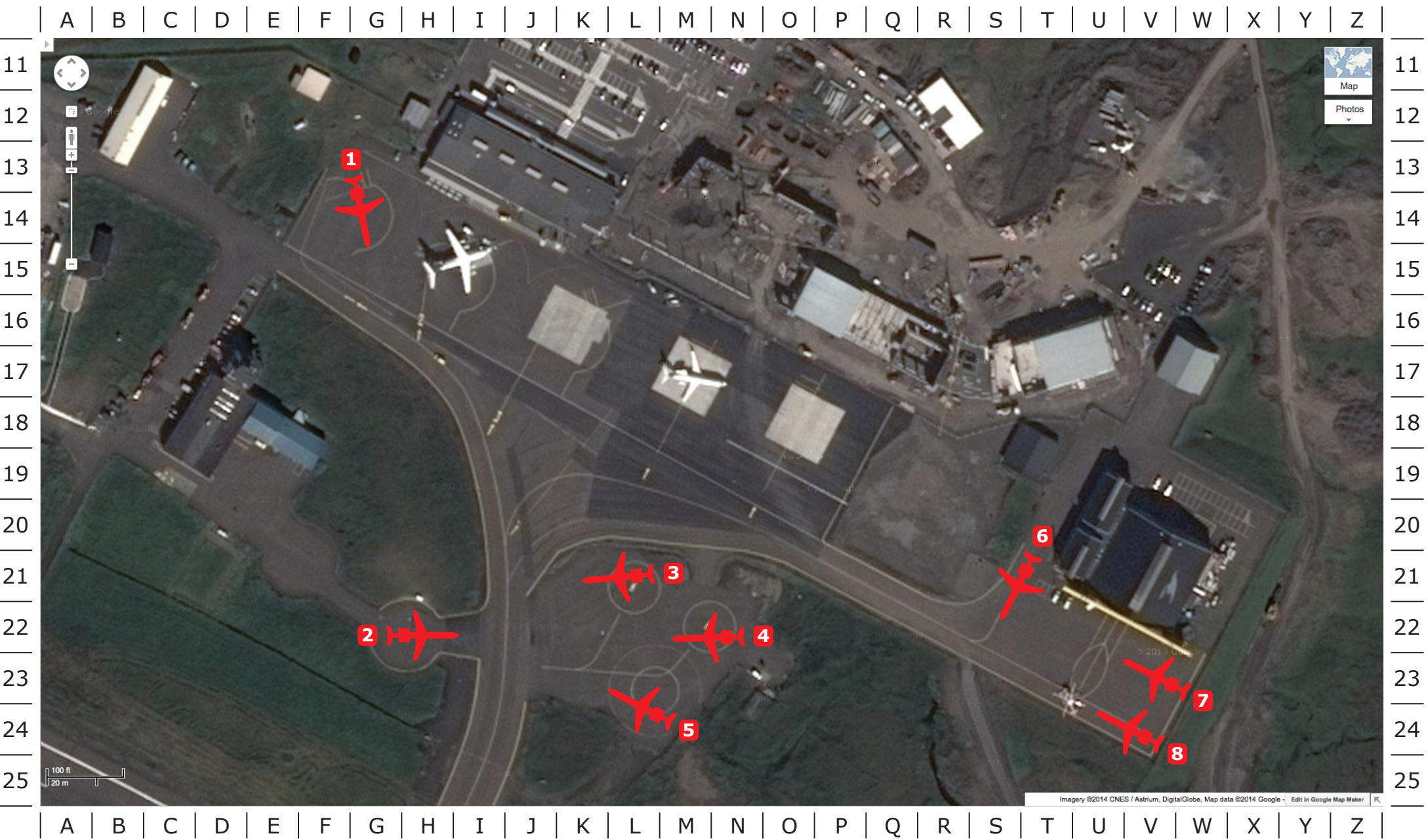
FAROES AIRPORT PLAN FOR ECLIPSE MORNING

For eclipse morning 2015 March 20 Friday, the plan we’re submitting pending authorities’ approval is that we will depart Aberdeen (ABZ) about 0500 in our 49-passenger Embraer ERJ-145 jet aircraft and arrive at Vágur, the Faroe Islands airport (FAE) at about 0600 (local time = UT), proceed immediately to a pre-designated parking position and, by prior appointment, have the fuel truck come refuel us there as soon as possible.

See below eight possible parking positions shown in red, depending on what the airport controllers allocate to us according to how their own planning comes together which is still in progress as of 2014 March.

We’ll stay there until 0845 with the option that, in case weather is favorable, any of our participants who prefer to stay on the ground for the eclipse can exit the aircraft as late as 0830 and walk out through the terminal to the airport parking lot. Most likely if good weather happens there will still be *some* cloudiness, so groundstayers should access vehicles which they have pre-arranged for mobility on the good Faroese roads of Vágur island where totality will range between about 2m13s and 2m19s.

Even if weather is perfect, aircraft will still fly to airborne observation of the eclipse. At 0845 we expect to begin taxiing for planned takeoff 0855 for rendezvous with the lunar umbra 0940-0943 northwest of Vágur, approx. 3m30s of totality at altitude 35,000+ feet. Then we’ll return to Vágur arriving about 1010 to pick up those who stayed earthbound, then depart again about 1200, back to Aberdeen by about 1300.



Airport automobile parking lot is at **J-M/11-12**. Tower is at **D/17** and tower parking lot is at **C-D/16-17**. Hangar is at **U-V/21** and hangar parking lot is at **V-W/20**. Old passenger terminal is at **I-K/13**. New passenger terminal is at **P-R/16**, of which construction now is much further along than shown in this 2011? 2012? Google Maps image, and is projected to be complete by or before 2015 March. By that time construction materials seen here at **M-O/13-14**, **Q-S/15** etc. should be cleared. Currently there’s a gravelly area at **Q-R/19-20**...any chance that will be paved by 2015 March = more aircraft parking spaces?

GROUND MOBILITY

Good weather at Vágur is unlikely but it *could* happen – like El Calafate 2010 and Cape Lopez 2013!

For instance here’s what the three Vágur airport webcams showed at 9:41am, mid-totality time, on 2014 February 18...



...evidencing considerable sunshine yet also, you-know-whats lurking nearby. So it will be *most* advisable, if remaining on terra firma, not to commit to one single stationary position such as in the airport parking lot but rather, to have transportation lined up even if only comprising simple taxis such as the ones which ordinarily attend Vágur airport.

Then if indeed pressing wheels into service, you’ll have access to 20+ kilometers of roads...



...for limb-corrected totality of 2m19.2s at the tiny hamlet of Bour, 2m17.6s at the village of Sørvágur, 2m17.0s at the airport, 2m13.4s at the villages of Miðvágur or Sandavágur, or 2m14.5s at the Streymoy tunnel entrance...with the sun at 19+ degrees elevation to the southeast at azimuth 132+ degrees.