

PROPOSED FAROES AIRPORT PLAN FOR ERJ-145 ON ECLIPSE MORNING

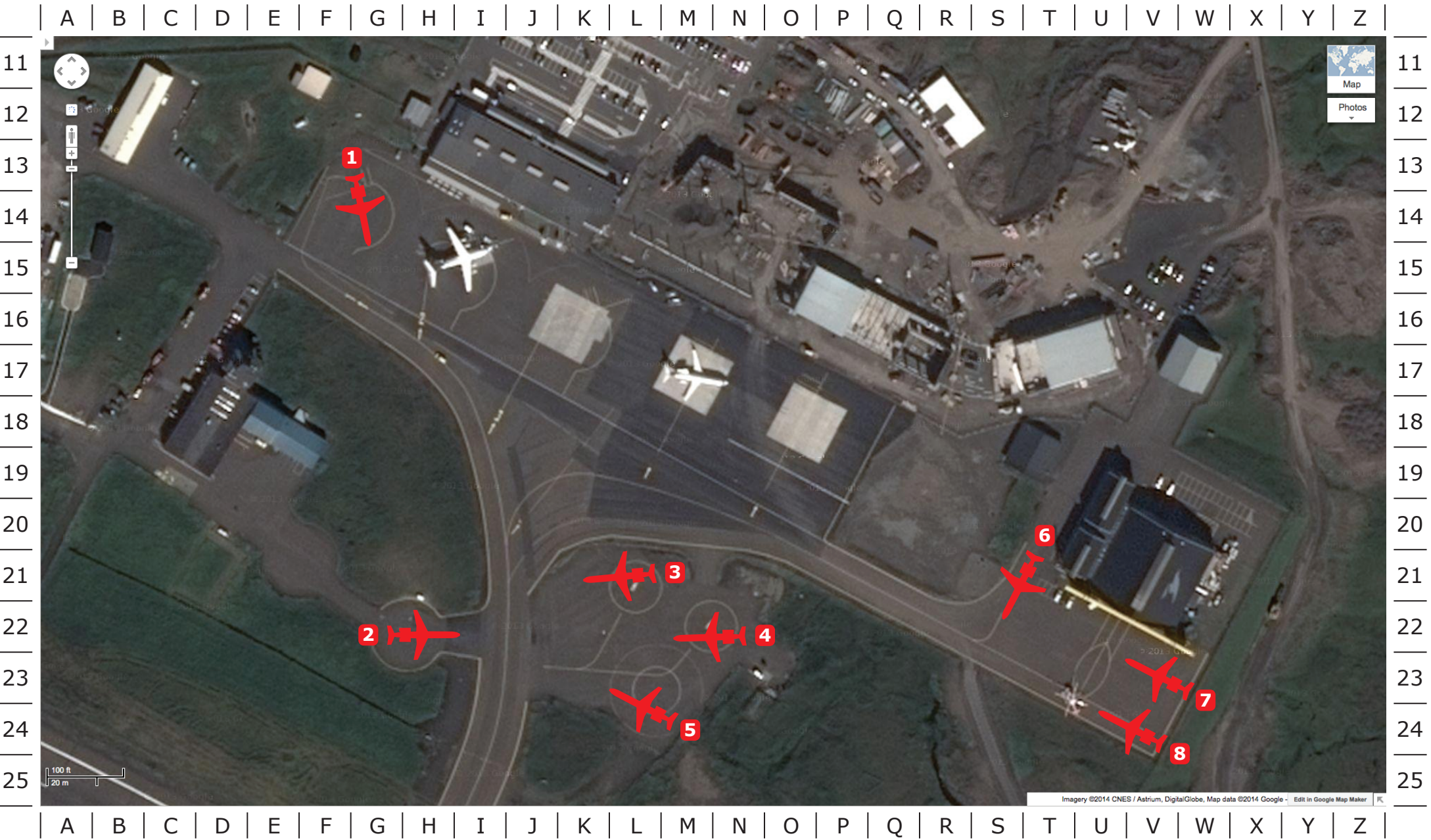
For eclipse morning 2015 March 20 Friday, departing Aberdeen (ABZ) about 0500 in our 49-pax BMI Regional ERJ-145 jet aircraft and arriving at Vágur, the Faroe Islands airport (FAE) at about 0600 (local time = UT), may we proceed immediately to a pre-assigned parking position and, by prior appointment, have the fuel truck come refuel us there as soon as possible. (Will customs/passports be necessary.) (Will we need a ground power unit or etc..)

See below eight possible parking positions shown in red? Of course it will depend on what the airport controllers allocate to us according to how their own planning comes together which is still in progress as of 2014 March.

We'd like to stay there until 0845 with the option that, in case weather is favorable, any of our passengers who prefer to stay on the ground for the eclipse can exit the aircraft up until as late as 0840 and walk out through the terminal to the airport parking lot to observe there or anywhere in the airport vicinity.

Even if weather is perfect, aircraft will still fly to airborne observation of the eclipse. We'd like to begin taxiing at 0845 for planned takeoff 0855 for rendezvous with the lunar umbra 0940-0943 northwest of Vágur, approx. 3m30s of totality at altitude 35,000+ feet. Then we'd like to return to Vágur arriving about 1010 to pick up those who stayed earthbound, then depart again about 1200, back to Aberdeen by about 1300.

If weather is completely unfavorable it means none of our ex-Aberdeen participants will have chosen terrestrial observation so the second FAE landing won't be necessary for their sake. However, even so we'd like to retain option for such a second landing if operational factors permit, because for example there may be other people who merely need post-eclipse \*transportation\* from Faroes to Aberdeen whom we'd like to pick up – TBD.



Airport automobile parking lot is at **J-M/11-12**. Tower is at **D/17** and tower parking lot is at **C-D/16-17**. Hangar is at **U-V/21** and hangar parking lot is at **V-W/20**. Old passenger terminal is at **I-K/13**. New passenger terminal is at **P-R/16**, of which construction now is much further along than shown in this 2011? 2012? Google Maps image, and is projected to be complete by 2014 May by which time construction materials seen here at **M-O/13-14**, **Q-S/15** etc. will be cleared. Currently there's a gravelly area at **Q-R/19-20**...any chance that will be paved by 2015 March = more aircraft parking spaces?