





VAGAR AIRPORT

Owner: Vagar Airport Ltd.
Address: Flogvøllurin 6
FO-380 Sørvágur
Telephone: +298 35 44 00
Telefax: +298 35 44 01
E-mail: fae@fae.fo
Web page: www.fae.fo
Nearest town: Sørvágur, 1.5 km
Reference point: 62.03.51N 007.16.38V
Management:
CEO: Jákup Sverri Kass
jsk@fae.fo, +298 212500

TECHNICAL DATA

Category:	3C – cat 6 – with optional upgrade		
Runway:	RWY 12	1,799 x 30 m asphalt, grooved – PCN 50	
	RWY 30	1,799 x 30 m asphalt, grooved – PCN 50	
Strip dimensions:	RWY 12	2,099 x 300 m	
	RWY 30	2,099 x 300 m	
Taxiway:	1, asphalt – PCN 50		
Apron:	Asphalt – PCN 50		
Local time:	Summer:	UTC +1	
	Winter:	UTC	
Instrument:	ILS, LLZ, DME		
Frequency:	124.85 kHz		
Elevation:	280 ft		
ICAO-abbreviation:	EKVG		
IATA-abbreviation:	FAE		

THE NEW RUNWAY

1799 m runway

ILS 30 (LLZ, GP, DME)

Centerlights

Flashlights East and West

New drainingsystem

RCMS light control

RNP approach

New papi

300 m security area



INSTRUMENT - ILS & RNP AR 0.1

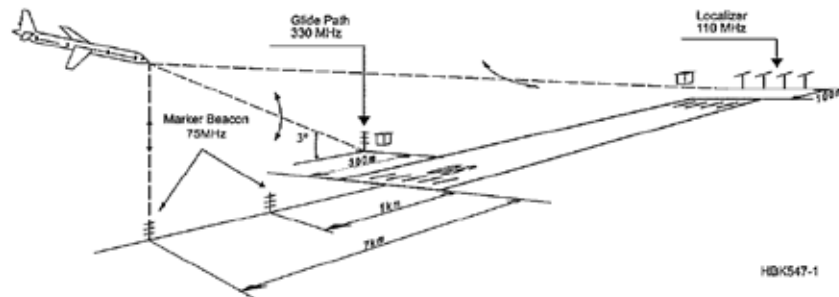
As part of the recent expansion of the airport FAE has invested in systems and procedures to improve flight regularity. A complete Instrument Landing System has been implemented and Vagar Airport is the first airport in Europe in which an airline has approved Required Navigation Performance procedures for approach and departure.

ILS

A complete Instrument Landing System comprises:

- A LOCALIZER SYSTEM, producing a radio course to furnish lateral guidance to the airport runway
- A GLIDE PATH SYSTEM, producing a radio course to furnish vertical guidance down the correct descent angle to the runway
- MARKER BEACONS, to provide accurate radio fixes along the approach course.

The layout of a typical ILS airport installation is shown below.



RNP

Required Navigation Performance (RNP) is a type of performance-based navigation (PBN) that allows an aircraft to fly a specific path between two 3-dimensionally defined points in space. RNP approaches with RNP values currently down to 0.1 allow aircraft to follow precise 3 dimensional curved flight paths through congested airspace, around noise sensitive areas, or through difficult terrain.

RNP procedures for approach and departures allow for better utilization of aircraft payload as climb gradient at engine loss is not equally vital and saves fuel through more precise route planning.

OPERATIONAL HOURS

Period	Day	Time (UTC)
All year	All week days	07.00 – 19.45

HANDLING OPTIONS

Two companies are offering ground handling services at FAE:

- 62°N – www.62n.fo/en/airport-handling
airport@62n.fo
- Atlantic Airways – www.atlantic.fo
station@atlantic.fo

TARIFFS OVERVIEW

Passenger charges			DKK 160 / 21€
Passengers in transit			DKK 70 / 9€
Security charges			DKK 25 / 3€
Passengers in transit			DKK 0
Take off charges		Each whole weight of 1,000 kg	Minimum charge
Aircraft up to 2,000 kg:			DKK 180 / 24€
Aircraft over 2,000 kg:		DKK 45 / 6€	DKK 220 / 30€
Parking charges	> 6 hours	DKK 12 / 1,5€	for every 24 hrs

INCENTIVE SCHEME REDUCTIONS

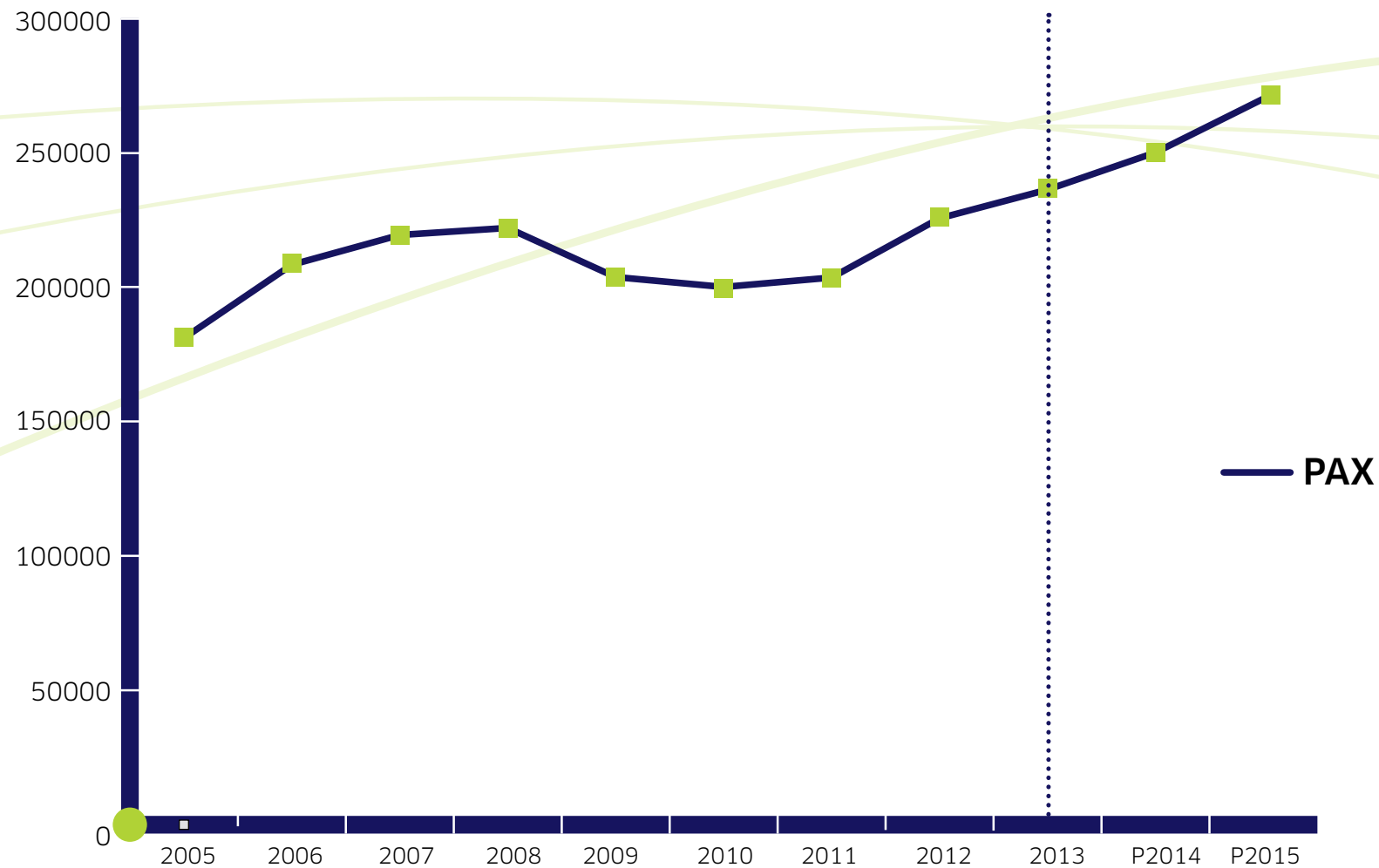
YEAR ROUND			SEASONAL		
Year	MTOW	PAX	Year	MTOW	PAX
1	100%	90%	1	50%	45%
2	90%	70%	2	45%	35%
3	80%	50%	3	40%	25%
4	40%	30%	4	20%	15%
5	20%	20%	5	10%	10%

In the tables above, the respective reductions in rates indicate what FAE offers to support the start up of new routes.

FAE is open for discussion of proposals for alternative incentive schemes.

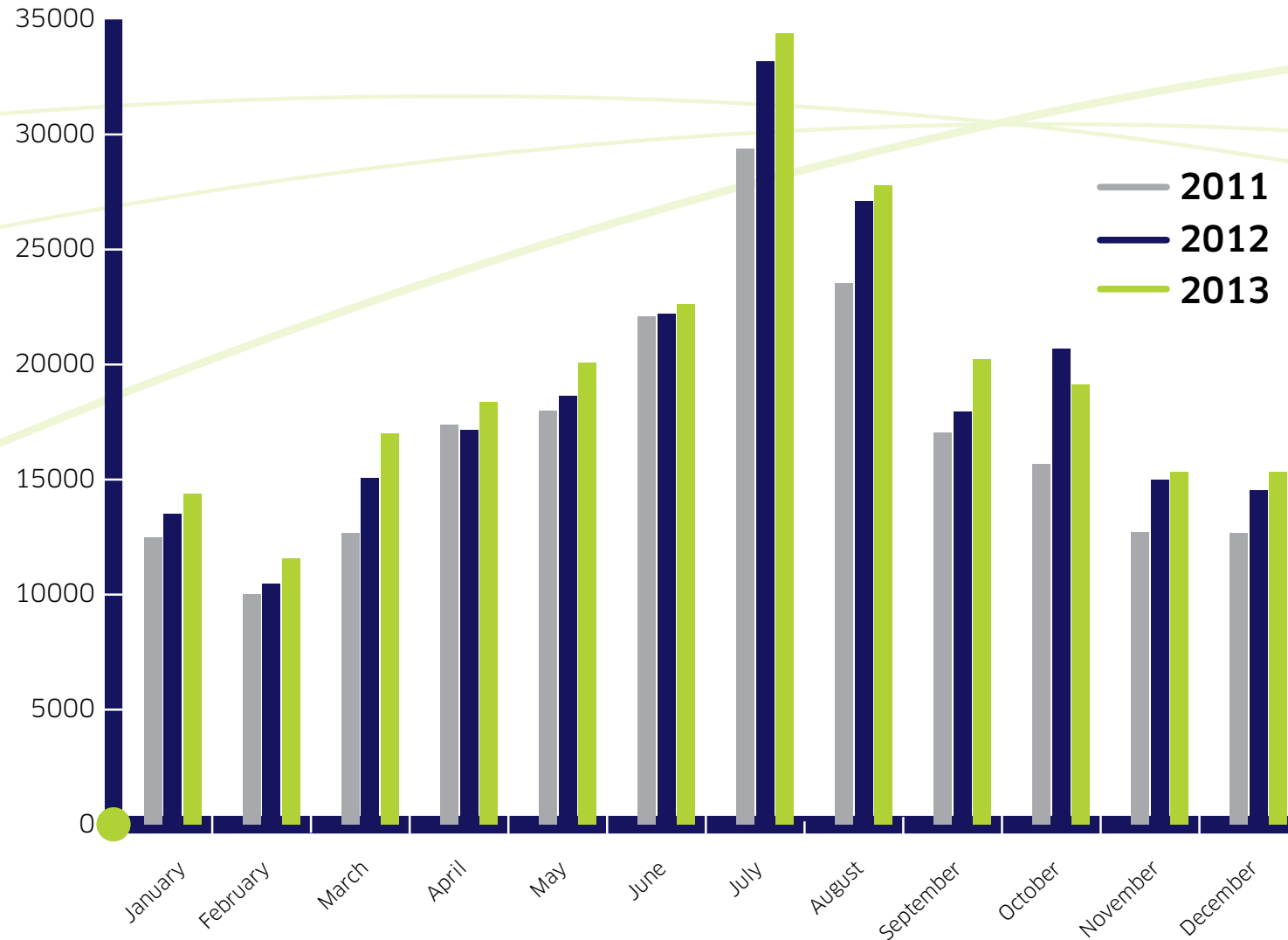
STATISTICS

Passengers p.a.

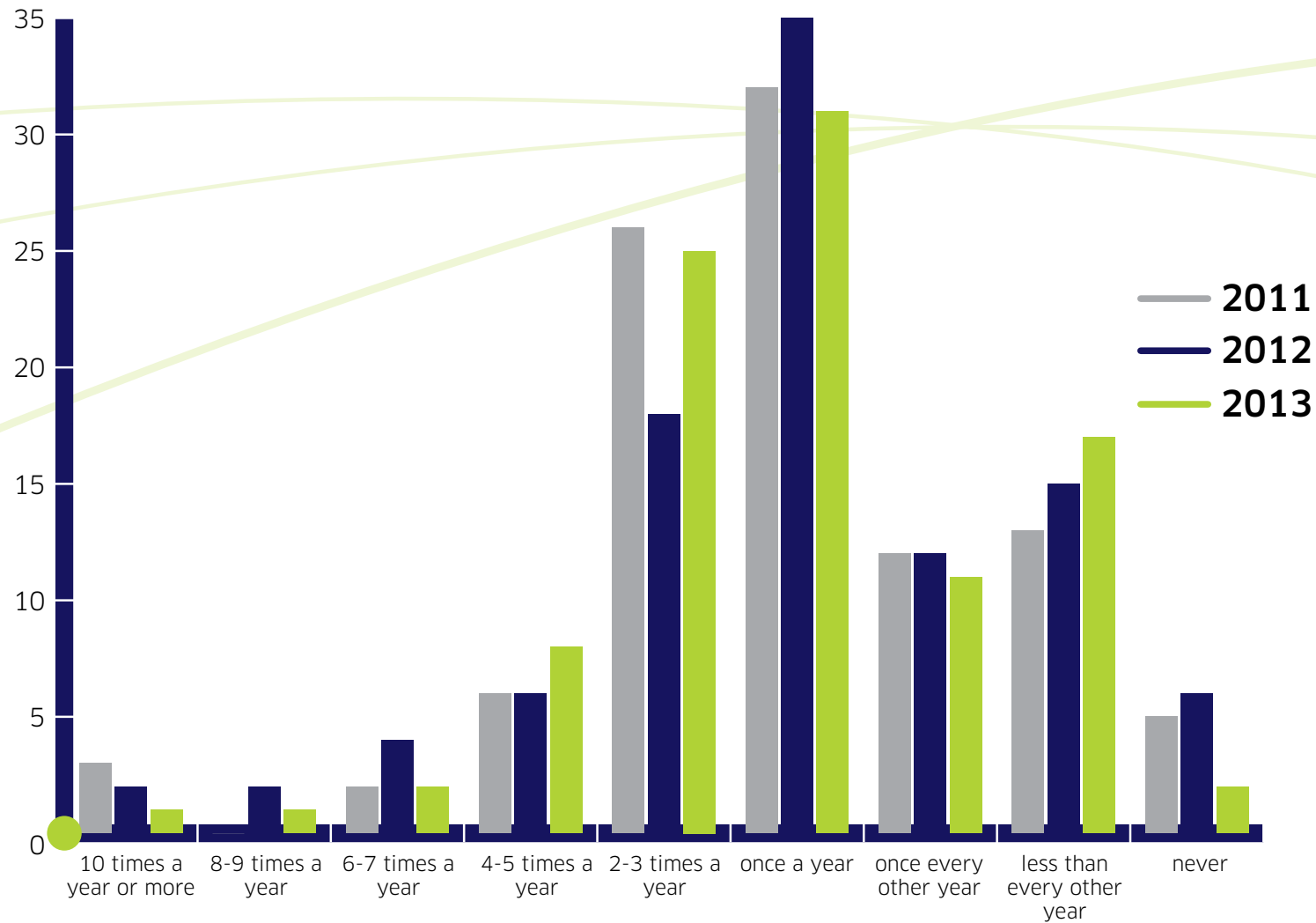


STATISTICS

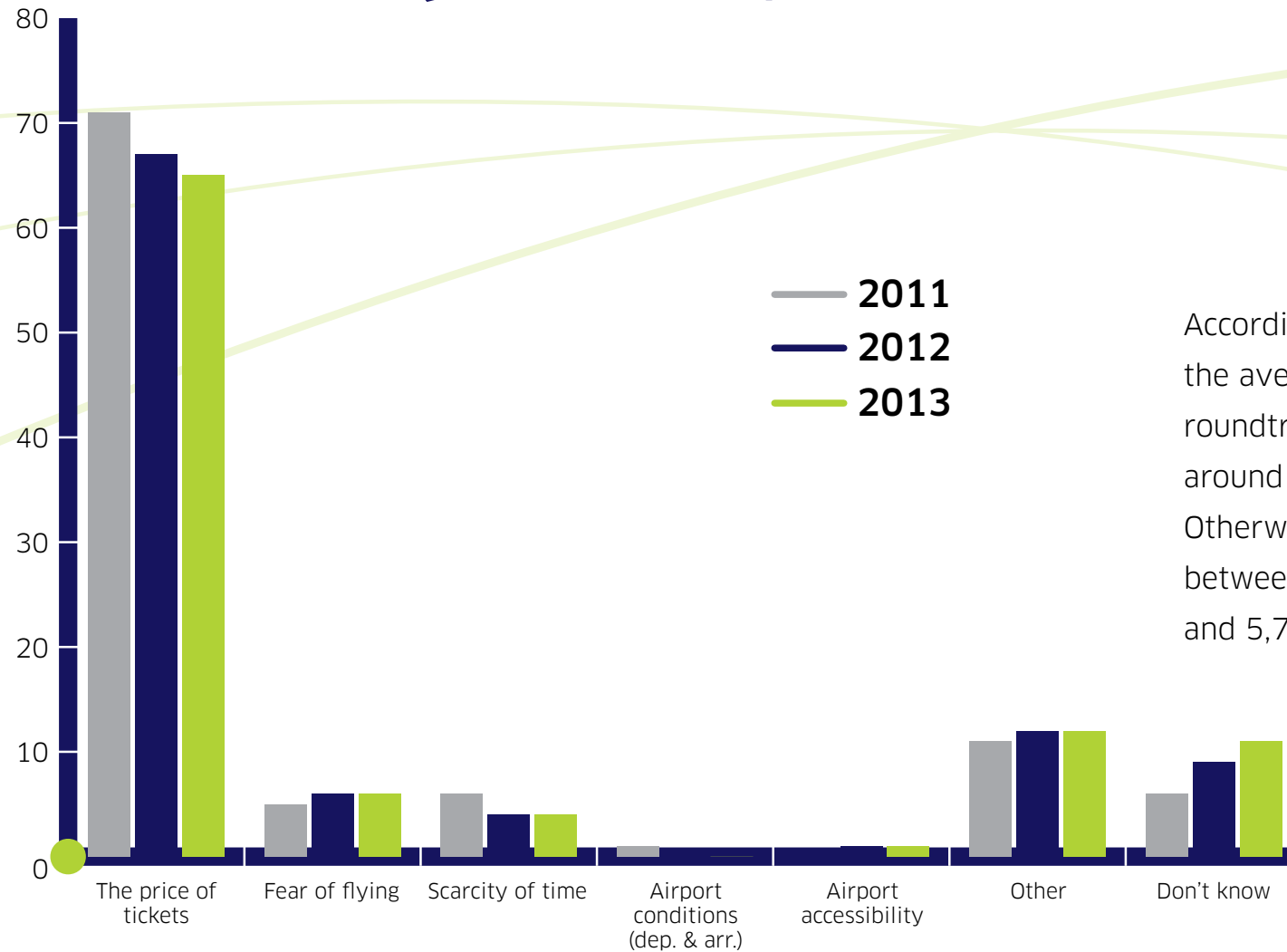
Monthly dispersion of passengers



HOW OFTEN DO YOU TRAVEL ABROAD

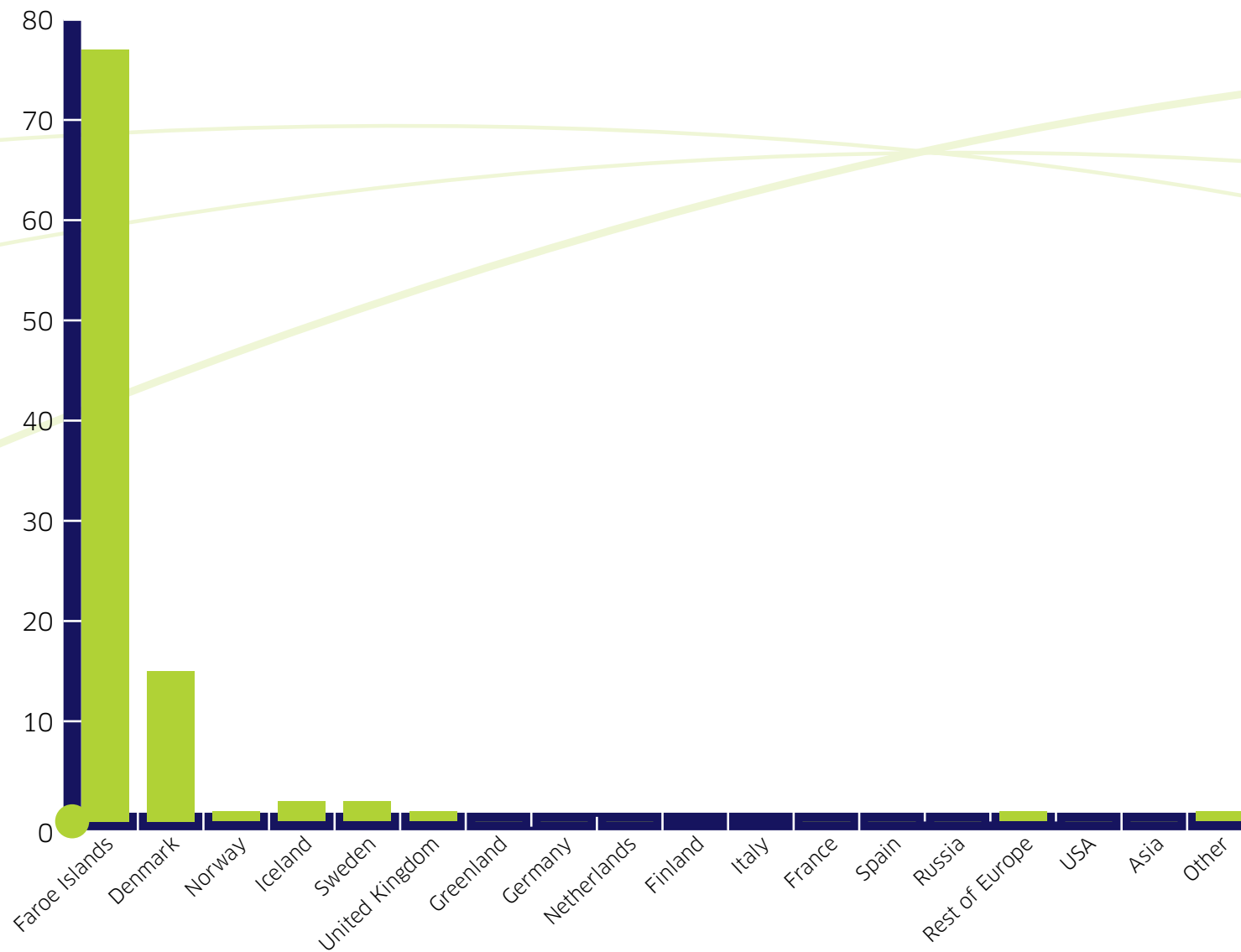


WHAT IS THE BIGGEST OBSTACLE THAT YOU DO NOT TRAVEL MORE FREQUENTLY TO/FROM THE FAROES BY AIR?

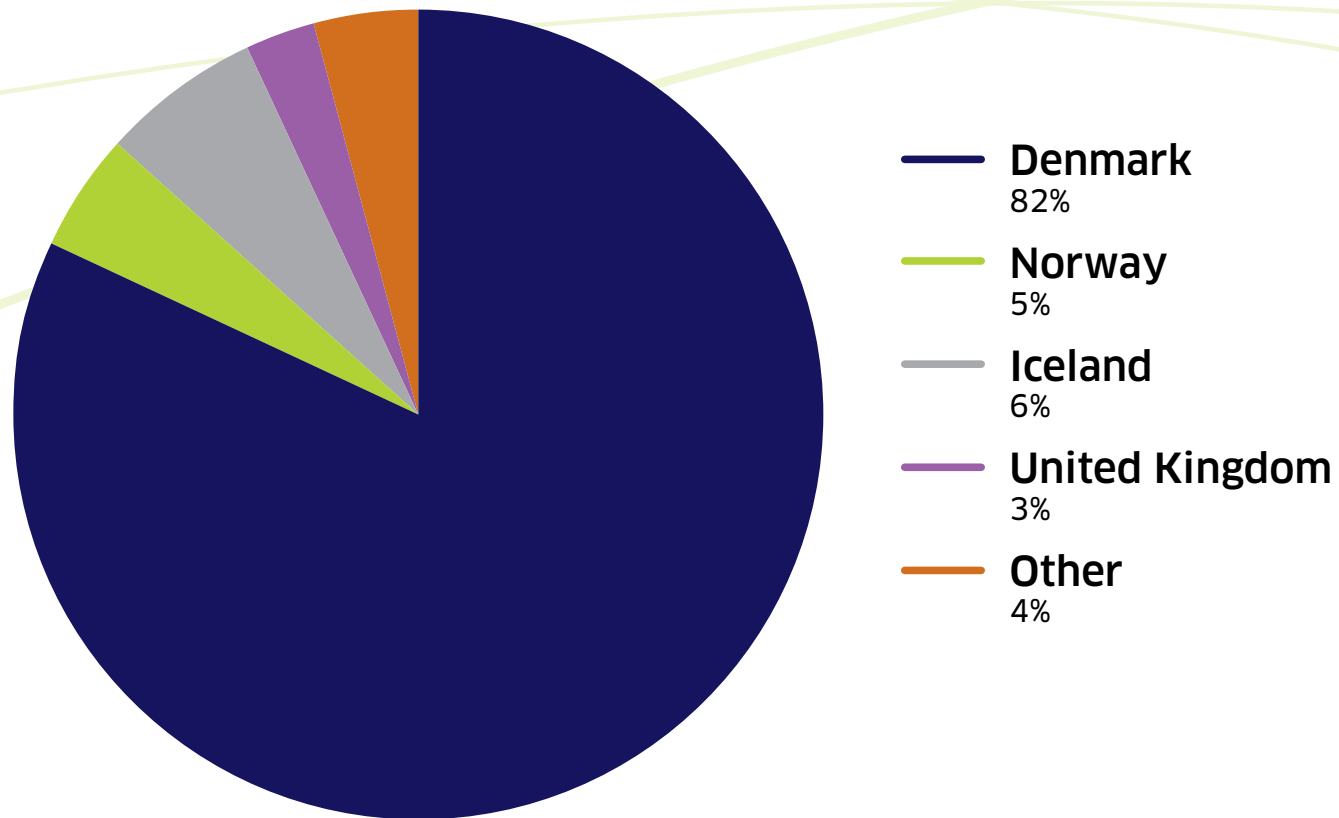


According to FAE's surveys the average price of a roundtrip to Copenhagen is around DKK 3,700 / 493€. Otherwise, prices vary between DKK 2,000 / 260€ and 5,700 / 760€.

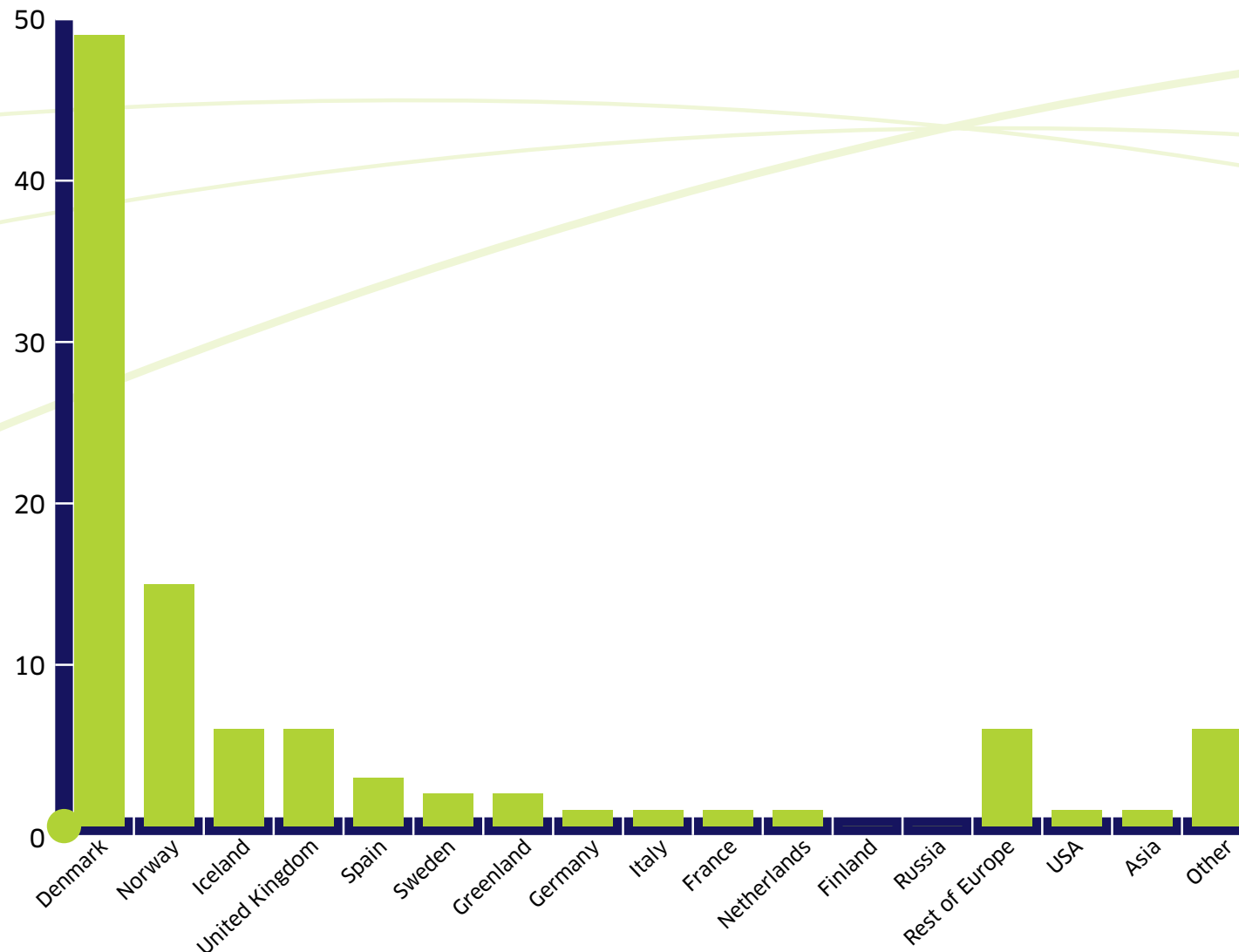
WHAT IS YOUR COUNTRY OF RESIDENCE?



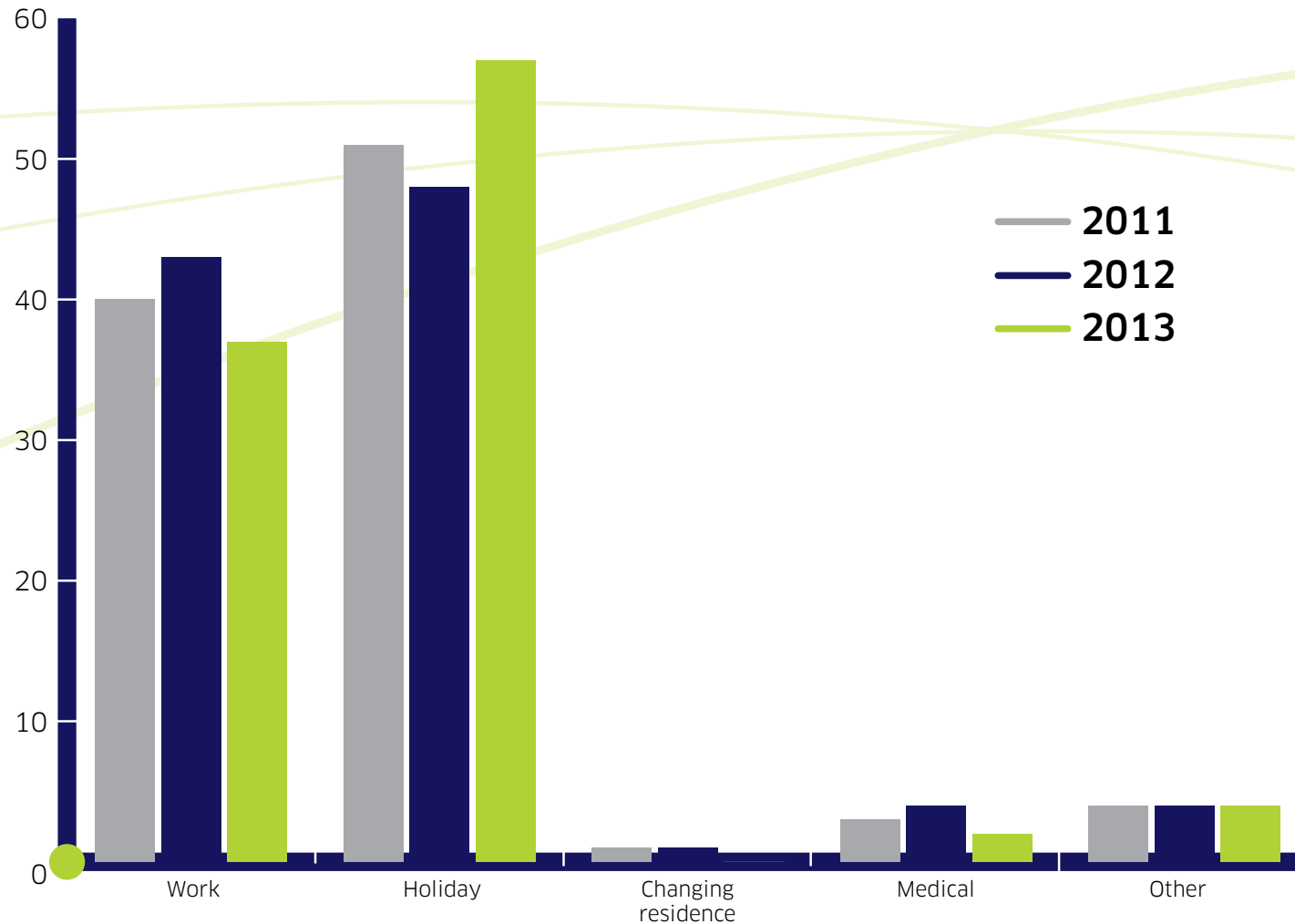
ORIGIN & DESTINATION - 2013



WHAT IS YOUR FINAL DESTINATION?



WHAT IS THE PURPOSE OF YOUR TRIP?



stories **UNTOLD**

big fish, big landscape, big tales

visitfaroeislands.com



the Faroe Islands
Unspoiled, Unexplored, Unbelievable

A woman with blonde hair tied back, wearing a white t-shirt and a large black backpack, is crouching on a rocky ledge. She is cupping her hands under a waterfall, drinking the water. The background shows a vast, mountainous landscape with a lake and a cloudy sky. The text 'drinking water UNFILTERED' is overlaid on the top right, and 'here the best drinks are on the house' is below it. The Faroe Islands logo and tagline are in the bottom right corner.

drinking water **UNFILTERED**

here the best drinks are on the house

visitfaroeislands.com



the Faroe Islands
Unspoiled, Unexplored, Unbelievable

come see nature

UNVEIL

before your eyes

visitfaroeislands.com



the Faroe Islands
Unspoiled. Unexplored. Unbelievable



FAE VAGAR AIRPORT