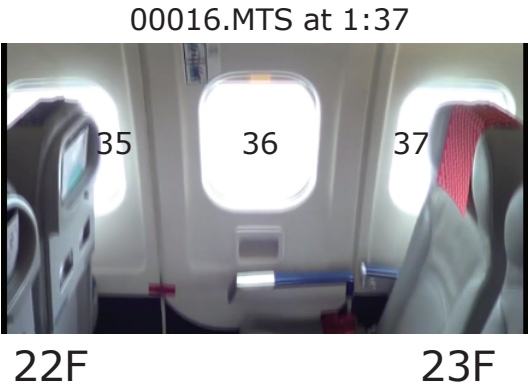
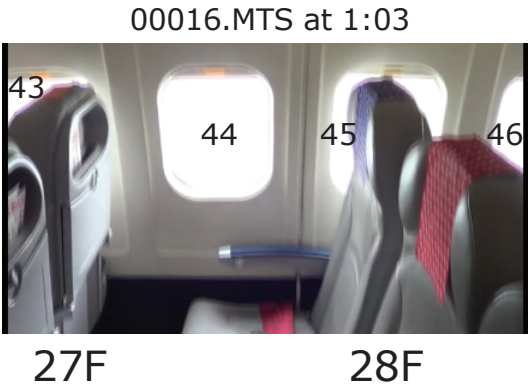


row 23 – EXIT ROW SO EXTRA LEGROOM
windows 36 37
seatback 23F will be authorized to lean back all the way
\$5850 rating this as 1.6 windows, pricing as 1.3

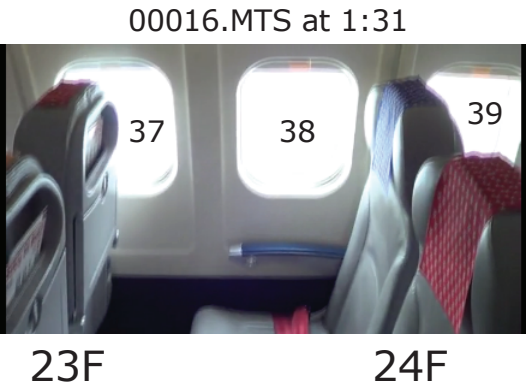


row 28
windows 44 45
seatback 28F will be authorized to lean back all the way which should open up enough space for, at least, a fine view of the approaching shadow, and maybe of the eclipsed sun itself utilizing available “squeeze room”
\$5400 rating this as 1.4 windows, pricing as 1.2

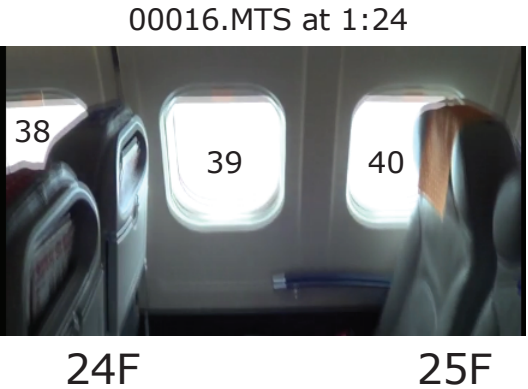


STANDARD \$3500 PER WINDOW

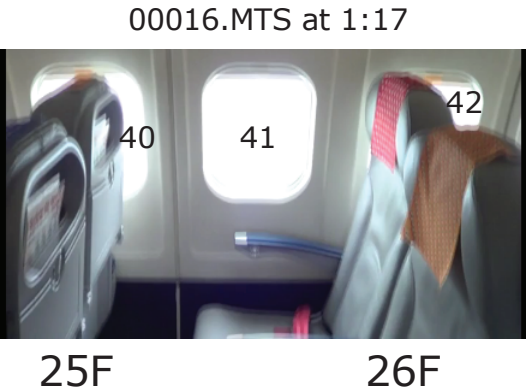
row 24
window 38
seatback 24F will not be authorized to lean back at all because it is already well-placed exactly in between windows 38 and 39
\$3500 as 1.0 windows



row 25
windows 39 40
seatback 25F will be authorized to lean back all the way so this row will have two full windows
\$5250 rating this as 2.0 windows, pricing as 1.5



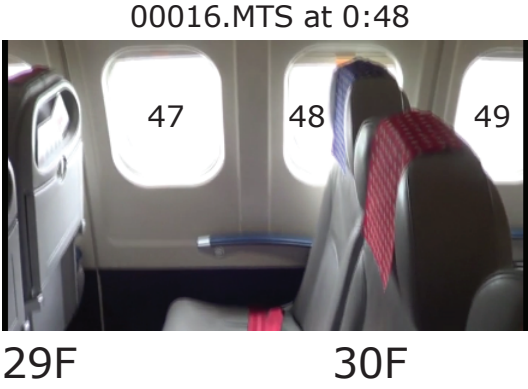
row 26
window 41
seatback 26F will not be authorized to lean back at all
\$3500 as 1.0 windows



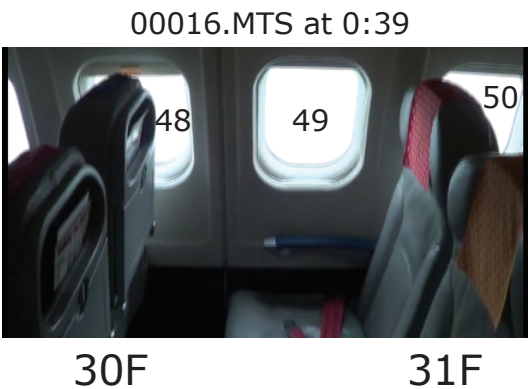
row 29
window 46
seatback 29F will be authorized to lean back but only an inch or two so that it is placed exactly in between windows 46 and 47, not all the way back, out of consideration for row 30
\$4500 as 1.0 windows



row 30
windows 47 48
seatback 30F will be authorized to lean back all the way
\$6300 rating this as 1.8 windows, pricing as 1.4

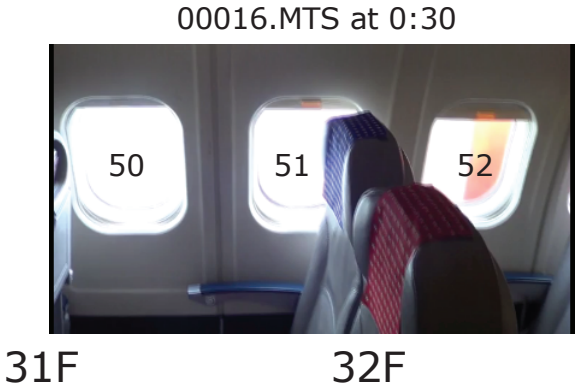


row 31
window 49
seatback 31F will not be authorized to lean back at all
\$4500 as 1.0 windows



STANDARD \$3500 PER WINDOW

row 32
windows 50 51
seatback 32F will be authorized to lean back all the way
\$4900 rating this as 1.8 windows, pricing as 1.4



PREMIER \$4500 PER WINDOW

row 27
windows 42 43
seatback 27F will be authorized to lean back a little more than halfway so that it is placed exactly in between windows 43 and 44, not all the way back, out of consideration for row 28
\$6300 rating this as 1.8 windows, pricing as 1.4

