



## UMBRACEPT DENMARK/FAROEES 2015 MARCH 20

- WITH GROUND OPTION IN CASE FAROES WEATHER IS GOOD —
- SUPERSEDES EARLIER ABERDEEN, SCOTLAND ERJ-145 PLAN —

Join our flight in an MD-83 jetliner from Billund, Denmark to Vágar, Faroe Islands airport, then airborne total solar eclipse observation run, then back to Billund! If Faroes weather is favorable you'll have the option to stay on the ground at Vágar while the aircraft flies for the eclipse then returns to Vágar, then back to Billund.

Airborne observation will be estimated 3 minutes 30 to 40 seconds in the moon's shadow at 35,000+ feet altitude at 430+ knots – view will be out the right-side windows with sun at a very comfortable elevation of 18+ degrees.

Or if you choose ground observation, duration will be 2 minutes 10+ seconds.

This supersedes our earlier plan to fly out of Aberdeen, Scotland with two ERJ-145 regional jets as now everyone will be able to fly on one single aircraft. In fact had we known about this MD-83 earlier it would have been our first choice all along!

We'll depart Billund (BLL) ~ 5:00am to arrive Vágar (FAE) ~ 6:15am sunrise (one hour time difference east-to-west), then take off at 8:55am for the eclipse flight. Then after totality aloft projected to be ~ 9:39:45-9:43:15 UT, we'll either:

(a) return to FAE arriving ~ 10:30am if indeed some participants have remained on the ground in the Faroes, then depart FAE ~ 11:30am to arrive back at Billund ~ 2:45pm (one hour time difference west-to-east), or otherwise

(b) bypass FAE after totality and return directly to Billund arriving ~ 1:00pm.

Even if weather at FAE is perfect, aircraft will still fly for totality.

We're very fond of the MD-83 because it has 51 right-side windows...and they're very nice windows as you can see here... whereas each ERJ-145 only had 16 windows on the right side. It means we can offer everyone a window or windows that are equivalent or somewhat better than what they would have had on the ERJ-145, plus some new upgrade options – see following.



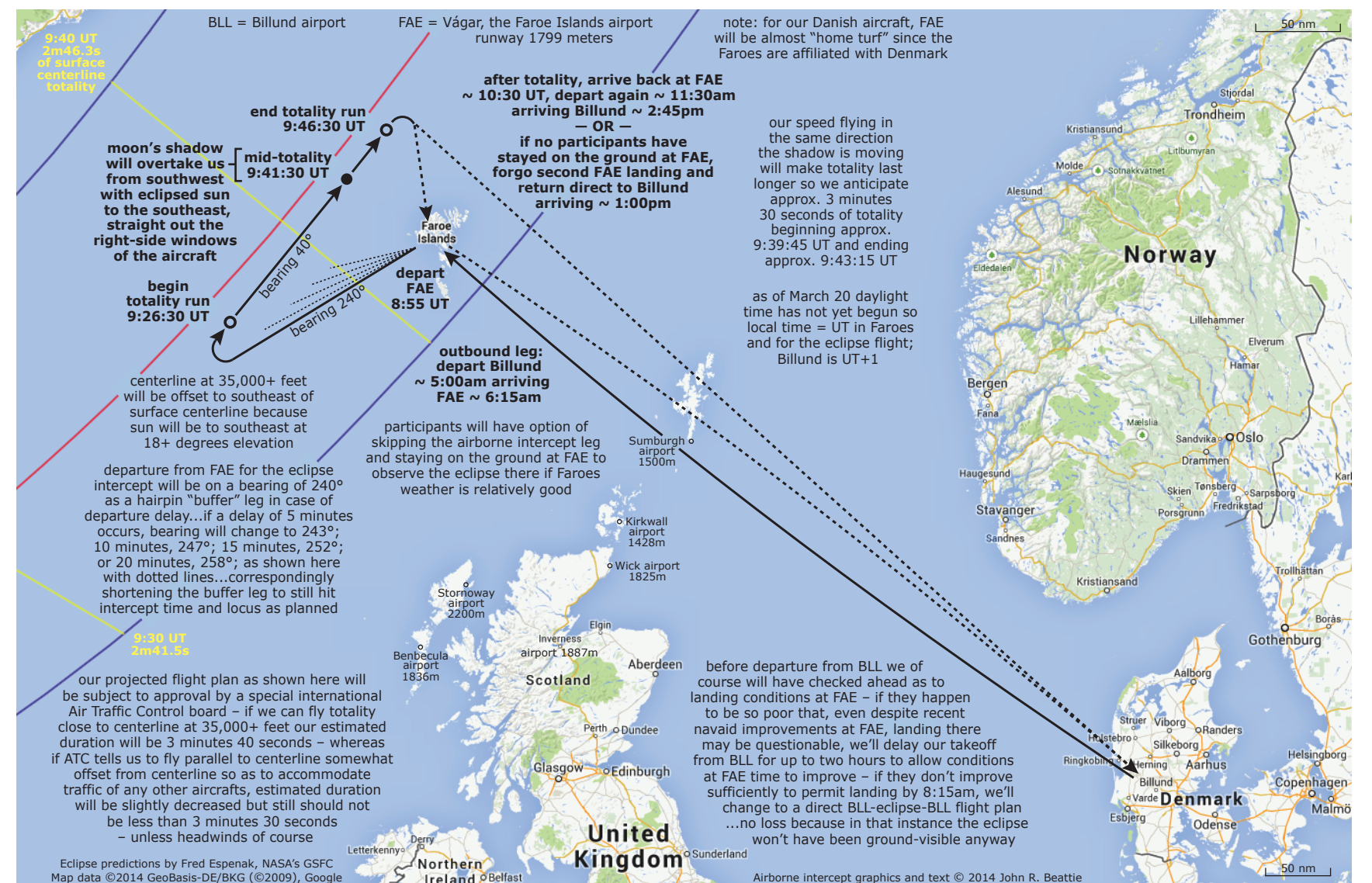
Also we like the fact that the Faroe Islands are affiliated with Denmark, so for our Danish aircraft, crewmembers, and flightplanners FAE will be quasi-"home turf".

Also we like the fact that the Faroese have recently lengthened the runway from 1250 meters to 1799 meters, are building a new terminal which is scheduled for completion by late 2014, and have been upgrading their navigational systems to state-of-the-art which will help ensure our charter flight can get in and out routinely on eclipse morning even in case of – not uncommon in the Faroes – inclement weather.

© John R. Beattie  
last update 2014 September 17



See ERJ-145, top, and MD-83 above at same scale...16 windows vs. 51 windows!



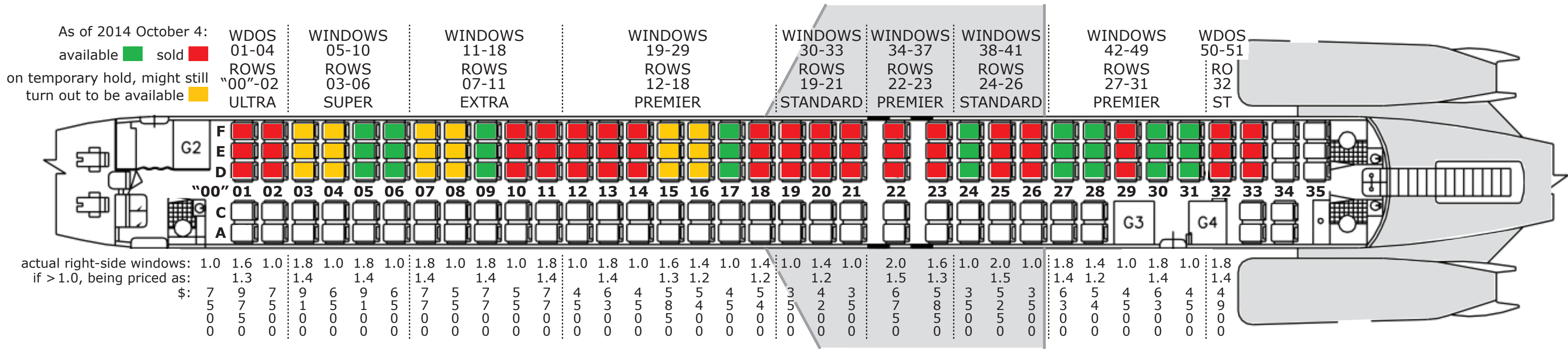
Good weather at Vágar is unlikely but it \*could happen\* – like El Calafate 2010 and Cape Lopez 2013! The flight plan we're proposing to ATC will give you until about 8:30am to decide whether to stay on the ground or fly. For instance, here's what Vágar airport looked like 2014 February 18 Tuesday at 9:41am "mid-totality time":











Note that in our new aircraft the MD-83, seat rows don't exactly correspond to windows as they did in the ERJ-145's so there are two sets of numbers: window numbers and seat row numbers. Some seat rows have only exactly 1.0 windows whereas others have 1.0-plus-a-fractional-window. Pricing is by seat row according to how many windows are in that seat row BUT: when there's an extra fractional window in a seat row we chop that extra fraction in half :) and add it to the 1.0 so as to calculate the price – thus improving the economics for two people sharing that seat row. For example if a seat row has 1.8 windows, for that row you pay 1.4 times what you would pay for a row in the same pricing category that has 1.0 windows. Plus note: in your right-side seat row you now get three seats – instead of only two as in the ERJ-145's.

Prices are in US dollars.

### TWO OPTIONS FAIRLY ANALOGOUS TO THE FORMER PLAN

#### Premier \$4500 per window

windows 19-29 (= seat rows 12-18)

windows 34-37 (= seat rows 22-23 = exit rows so extra room)

windows 42-49 (= seat rows 27-31)

#### Standard \$3500 per window

windows 30-33 (= seat rows 19-21)

windows 38-41 (= seat rows 24-26)

windows 50-51 (= seat row 32)

### NEW DELUXE, HIGHER-PRICED OPTIONS NOW AVAILABLE PROGRESSIVELY FURTHER FORWARD FROM THE WING

#### Extra Premier \$5500 per window

windows 11-18 (= seat rows 07-11)

#### Super Premier \$6500 per window

windows 05-10 (= seat rows 03-06)

#### Ultra Premier \$7500 per window

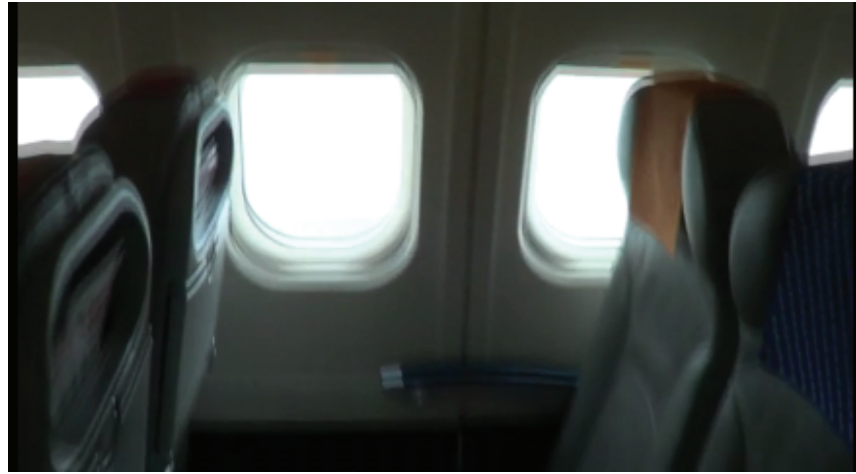
window 01 (= seat row "00")

windows 02-04 (= seat rows 01-02)

To sign up and/or for more information contact Tim Todd at T.E.I. Tours, [tei@teiglobal.com](mailto:tei@teiglobal.com), +1 925-825-6104, <http://www.teiglobal.com>.

For each seat row we're specifying in advance whether its F seatback is permitted to lean back during the eclipse observation and if so by how much, and whether the F seatback in the preceding row is permitted to lean back and if so by how much. These predesignated leanback amounts figure in the price calculation for each row.

for example: seat 5F before leanback



seat 5F after leanback



This charter requires a minimum of 24 booked rows to operate in the MD-83. If the minimum is not met we reserve the right to reconfigure to a certain smaller jetliner we have in mind, for which flying to Denmark would still be required so as to join the charter. Or if we do not reach at least 18 booked rows we reserve the right to cancel the charter entirely. However, we are optimistic the charter will be able to operate as planned in the MD-83 and expect to confirm that by end of 2014 or sooner.



Per our request, the aircraft provider has made an interior video of the MD-83, see here the sixth item labeled 00016.MTS...

https://www.dropbox.com/sh/smcrlffigfjj2h/AAASEsFrdJdgSsTOafTMheL2a?lst

...in which we would have preferred a straight linear walk-through instead of all the up-and-down zigzags but nevertheless this is helpful giving good views of the right-side windows and seat rows.

ULTRA PREMIER \$7500 PER WINDOW

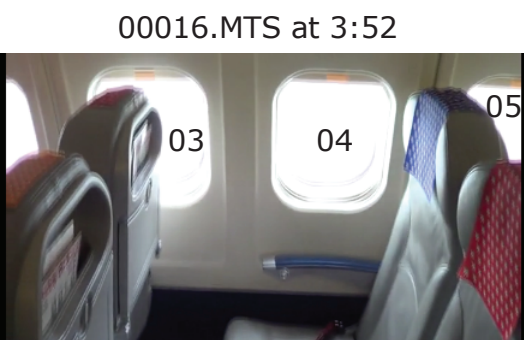
row “00”  
window 01  
\$7500 as 1.0 windows

row 01  
windows 02 03  
seatback 01F will be authorized to lean back all the way  
\$9750 rating this as 1.6 windows, pricing as 1.3

row 02  
window 04  
seatback 02F will not be authorized to lean back at all because it is already well-placed exactly in between windows 04 and 05  
\$7500 as 1.0 windows



01F

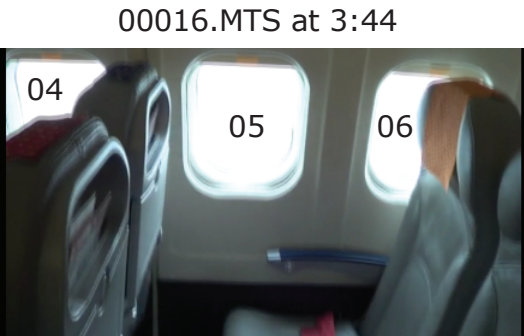


01F

02F

SUPER PREMIER \$6500 PER WINDOW

row 03  
windows 05 06  
seatback 03F will be authorized to lean back all the way  
\$9100 rating this as 1.8 windows, pricing as 1.4



02F

03F

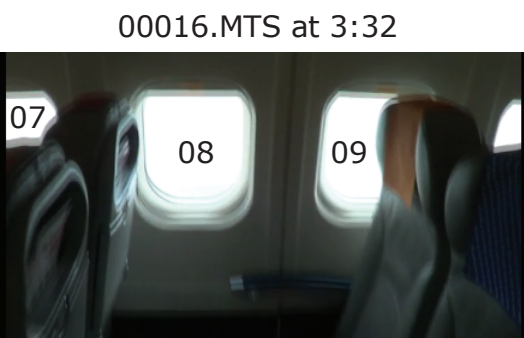
row 04  
window 07  
seatback 04F will not be authorized to lean back at all  
\$6500 as 1.0 windows



03F

04F

row 05  
windows 08 09  
seatback 05F will be authorized to lean back all the way  
\$9100 rating this as 1.8 windows, pricing as 1.4



04F

05F

row 06  
window 10  
seatback 06F will not be authorized to lean back at all  
\$6500 as 1.0 windows



05F

06F

EXTRA PREMIER \$5500 PER WINDOW

row 07  
windows 11 12  
seatback 07F will be authorized to lean back all the way  
\$7700 rating this as 1.8 windows, pricing as 1.4



06F

07F

row 08  
window 13  
seatback 08F will not be authorized to lean back at all  
\$5500 as 1.0 windows



07F

08F

row 09  
windows 14 15  
seatback 09F will be authorized to lean back all the way  
\$7700 rating this as 1.8 windows, pricing as 1.4



08F

09F

row 10  
window 16  
seatback 10F will not be authorized to lean back at all  
\$5500 as 1.0 windows



09F

10F

row 11  
windows 17 18  
seatback 11F will be authorized to lean most of the way back so that it is placed exactly in between windows 18 and 19, not all the way back, out of consideration for row 12  
\$7700 rating this as 1.8 windows, pricing as 1.4



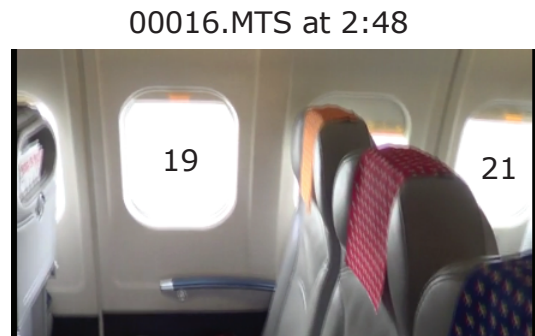
10F

11F



PREMIER \$4500 PER WINDOW

row 12  
window 19  
seatback 12F will not be authorized to lean back at all  
\$4500 as 1.0 windows



row 13  
windows 20 21  
seatback 13F will be authorized to lean most of the way back so that it is placed exactly in between windows 21 and 22, not all the way back, out of consideration for row 14  
\$6300 rating this as 1.8 windows, pricing as 1.4



row 14  
window 22  
seatback 14F will not be authorized to lean back at all  
\$4500 as 1.0 windows



row 15  
windows 23 24  
seatback 15F will be authorized to lean back about halfway so that it is placed exactly in between windows 24 and 25, not all the way back, out of consideration for row 16  
\$5850 rating this as 1.6 windows, pricing as 1.3



row 16  
windows 25 26  
seatback 16F will be authorized to lean back all the way which should open up enough space for, at least, a fine view of the approaching shadow past the not-very-large wing, and maybe of the eclipsed sun itself utilizing available "squeeze room"  
\$5400 rating this as 1.4 windows, pricing as 1.2



row 17  
window 27  
seatback 17F will be authorized to lean back about 2 inches so that it is placed exactly in between windows 27 and 28, not all the way back, out of consideration for row 18  
\$4500 as 1.0 windows



row 18  
windows 28 29  
seatback 18F will be authorized to lean back all the way which should open up enough space for, at least, a fine view of the approaching shadow, and maybe of the eclipsed sun itself utilizing available "squeeze room"  
\$5400 rating this as 1.4 windows, pricing as 1.2



STANDARD \$3500 PER WINDOW

row 19  
window 30  
seatback 19F will be authorized to lean back 1 or 2 inches so that it is placed exactly in between windows 30 and 31, not all the way back, out of consideration for row 20  
\$3500 as 1.0 windows



row 20  
windows 31 32  
seatback 20F will be authorized to lean back all the way which should open up enough space for, at least, a fine view of the approaching shadow, and maybe of the eclipsed sun itself utilizing available "squeeze room"  
\$4200 rating this as 1.4 windows, pricing as 1.2



row 21  
window 33  
seatback 21F will be authorized to lean back about halfway so that it is placed exactly in between windows 33 and 34, not all the way back, out of consideration for row 22  
\$3500 as 1.0 windows



PREMIER \$4500 PER WINDOW

row 22 – EXIT ROW SO EXTRA LEGROOM  
windows 34 35  
seatback 22F will be authorized to lean back all the way so this row will have two full windows  
\$6750 rating this as 2.0 windows, pricing as 1.5



row 23 – EXIT ROW SO EXTRA LEGROOM  
windows 36 37  
seatback 23F will be authorized to lean back all the way  
\$5850 rating this as 1.6 windows, pricing as 1.3



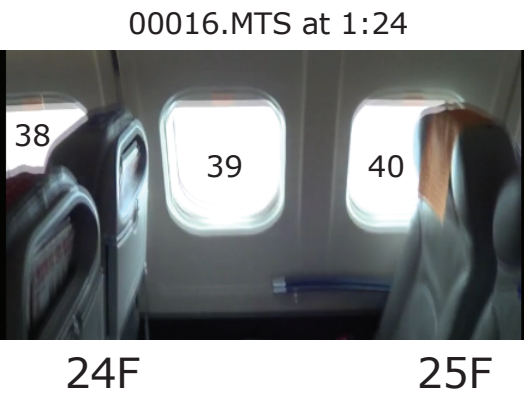


STANDARD \$3500 PER WINDOW

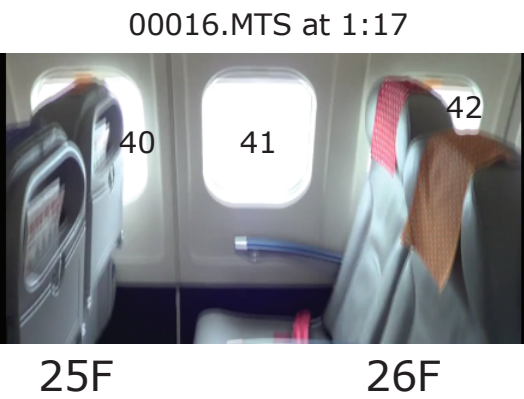
row 24  
window 38  
seatback 24F will not be authorized to lean back at all because it is already well-placed exactly in between windows 38 and 39  
\$3500 as 1.0 windows



row 25  
windows 39 40  
seatback 25F will be authorized to lean back all the way so this row will have two full windows  
\$5250 rating this as 2.0 windows, pricing as 1.5

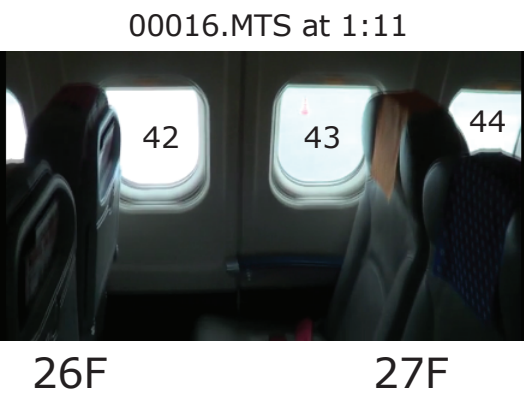


row 26  
window 41  
seatback 26F will not be authorized to lean back at all  
\$3500 as 1.0 windows

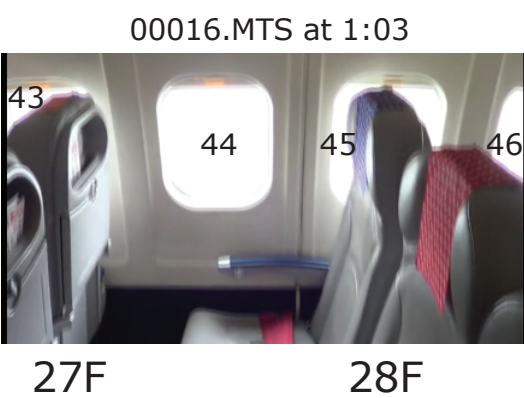


PREMIER \$4500 PER WINDOW

row 27  
windows 42 43  
seatback 27F will be authorized to lean back a little more than halfway so that it is placed exactly in between windows 43 and 44, not all the way back, out of consideration for row 28  
\$6300 rating this as 1.8 windows, pricing as 1.4



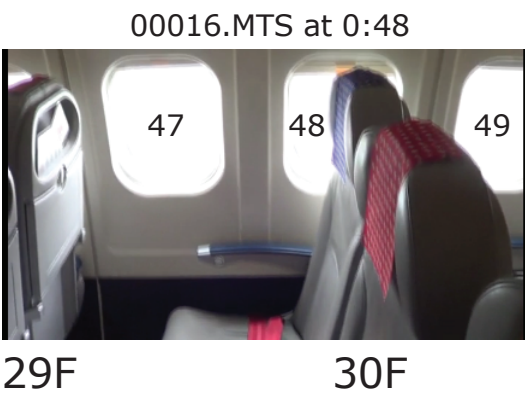
row 28  
windows 44 45  
seatback 28F will be authorized to lean back all the way which should open up enough space for, at least, a fine view of the approaching shadow, and maybe of the eclipsed sun itself utilizing available “squeeze room”  
\$5400 rating this as 1.4 windows, pricing as 1.2



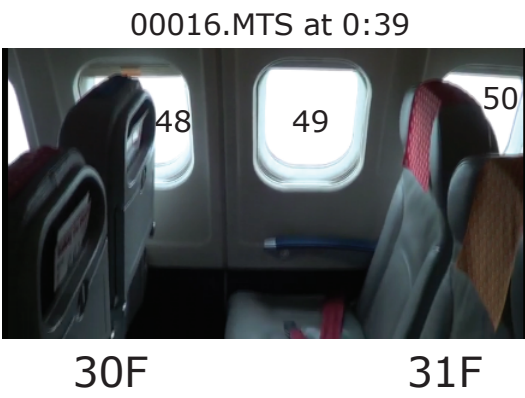
row 29  
window 46  
seatback 29F will be authorized to lean back but only 1 or 2 inches so that it is placed exactly in between windows 46 and 47, not all the way back, out of consideration for row 30  
\$4500 as 1.0 windows



row 30  
windows 47 48  
seatback 30F will be authorized to lean back all the way  
\$6300 rating this as 1.8 windows, pricing as 1.4



row 31  
window 49  
seatback 31F will not be authorized to lean back at all  
\$4500 as 1.0 windows



STANDARD \$3500 PER WINDOW

row 32  
windows 50 51  
seatback 32F will be authorized to lean back all the way  
\$4900 rating this as 1.8 windows, pricing as 1.4

